

xLM Oracle Replication Monitor

Challenges:

- No existing built-in Oracle Replication monitor tool
- Existing monitor approaches are manual based
- Disadvantages of manual process:
 - A provision or reminder must be in place to check for replication issues
 - Requires manual examination of process status
 - May delay error discovery and response time
 - Delayed response may render the initial, propagated and accumulated errors costly to repair
 - Database may need to be re-replicated
 - No GUI available for monitoring status in Oracle 11g

Solution:

- The *xLM Oracle Replication Monitor* is a convenient tool for monitoring the Oracle data replication process and reports issues and errors via timely, custom email messages

Features:

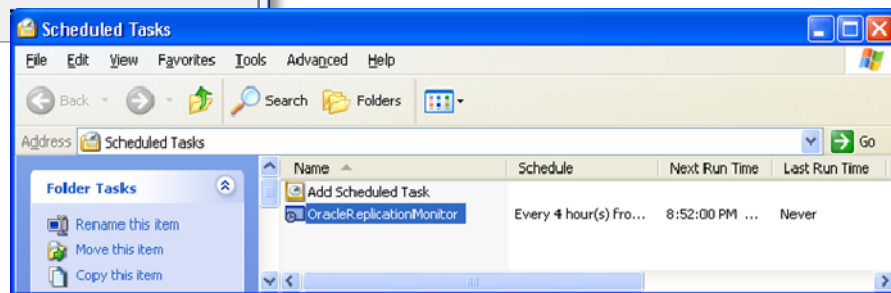
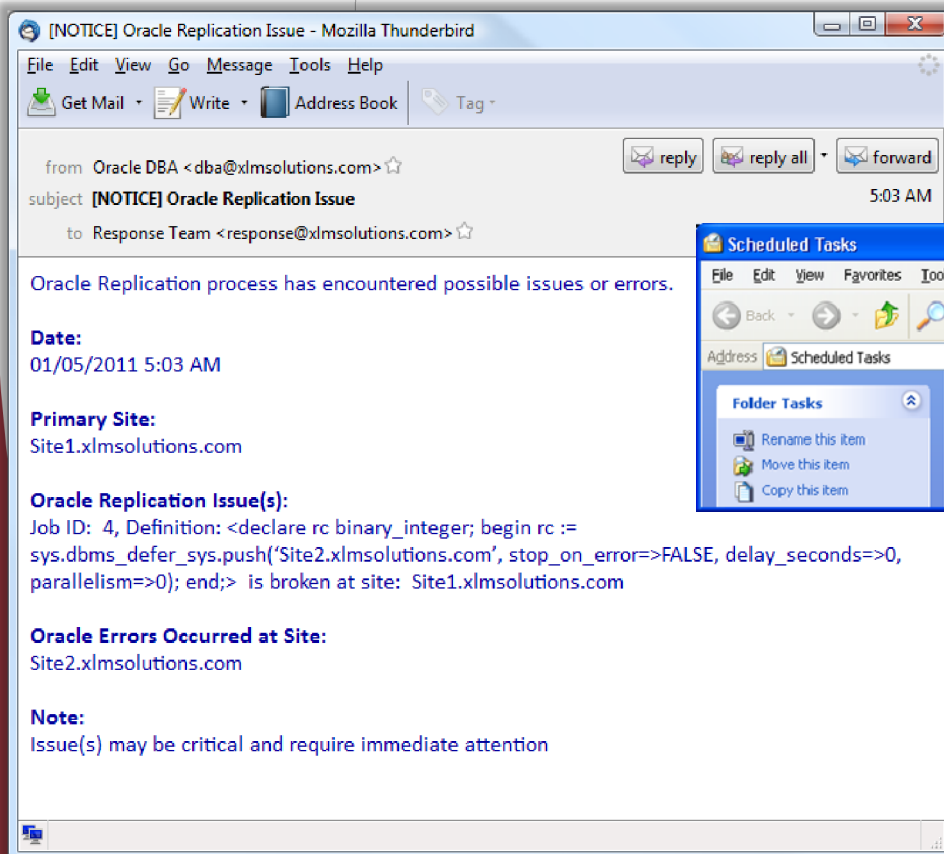
- Monitors and reports conditions:
 - Oracle Replication jobs
 - Oracle Replication process errors
 - Broken database links
 - Connection errors with remote sites
- Selectable notification recipients
- Flexible status check intervals
- Simple installation and configuration steps
- Worry-free operations
 - Configures as a Windows task
 - Starts automatically with Windows
 - "Set once and forget"

Benefits:

- Automatic Oracle Replication status checks and error reports require significantly less dedicated valuable resources than manual solutions
- Timely notifications allows rapid response to issues and errors
- Minimizes error impact and reduces repair costs
- Facilitates error identification, tracking and elimination

System Requirements:

- Oracle 10g or later
- Microsoft .NET Framework 2.0 or above
- Access to a properly configured SMTP server



xLM Oracle Replication Monitor presents the convenience and benefits of a Windows task

xLM Oracle Replication Monitor reports issues and errors via timely email messages